

PRODUCT OVERVIEW

Aurora[®] Rapid[™] 5x75

5 cm x 75 µm



Maximal throughput for single-cell and low input samples.

Aurora[®] Rapid[™] 5x75 delivers high-throughput analysis of single cells, achieving extreme sensitivity using short gradients. With further improved spray stability and increased robustness, Generation 4 Aurora[®] Rapid[™] 5x75 lets you identify more than 1300 proteins from 250 pg of sample, 80 times per day on an Evosep One and timsTOF SCP.

Product Benefits

- + High throughput
- + Nanoflow
- + Sensitivity
- + Analyse more cells in less time

Ideal for:
High-throughput
single cell
proteomics

80-300
SPD

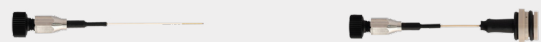
5-15_{min}
Gradients

Specifications

Column format	Analytical column
Column type	Reversed-phase
For use with	UHPLC
Length	5 cm
Inner Diameter	75 µm
Pore size	120 Å
Pressure	>1700 bar
Temp. limits	60°C
Particle size	1.7 µm
pH stability	1-8
Stationary phase	C18

Suggested flow rate 100-2000 nL/min
(higher flow rate generally require heating to keep the back pressure within manageable levels)

Compatibility



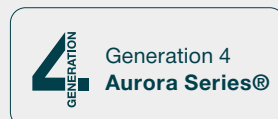
Aurora@

Aurora@ CSI

	Aurora@	Aurora@ CSI
CaptiveSpray		✓
CaptiveSpray 2		✓
CaptiveSpray Ultra		✓
EASY-Spray	✓	
Nanospray Flex	✓	
Newomics UniESI	✓	
Newomics DuoESI	✓	
OptiFlow Turbo V		
OptiFlow Pro		



Introducing the HeatSync[™] range - the perfect companion to make the world's best chromatography even better. Includes the new HeatSync[™] Controller and HeatSync[™] Column Heater.



Ion Opticks Pty Ltd
ABN: 99 621 674 459
12 Gipps St
Collingwood VIC 3066
Australia

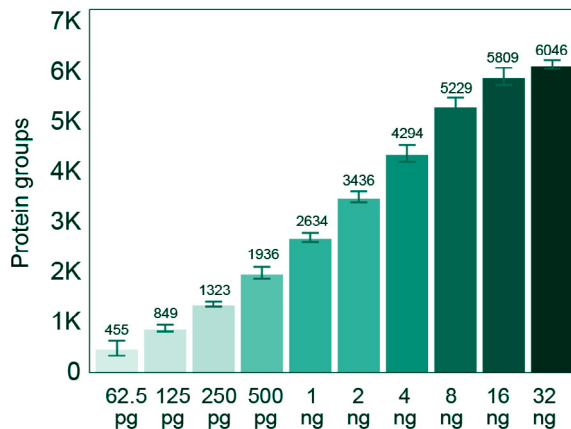
www.ionopticks.com



Get more from less.

Identify more than 1300 proteins from 250pg of sample, 80 times per day on an Evosep One and timsTOF SCP.

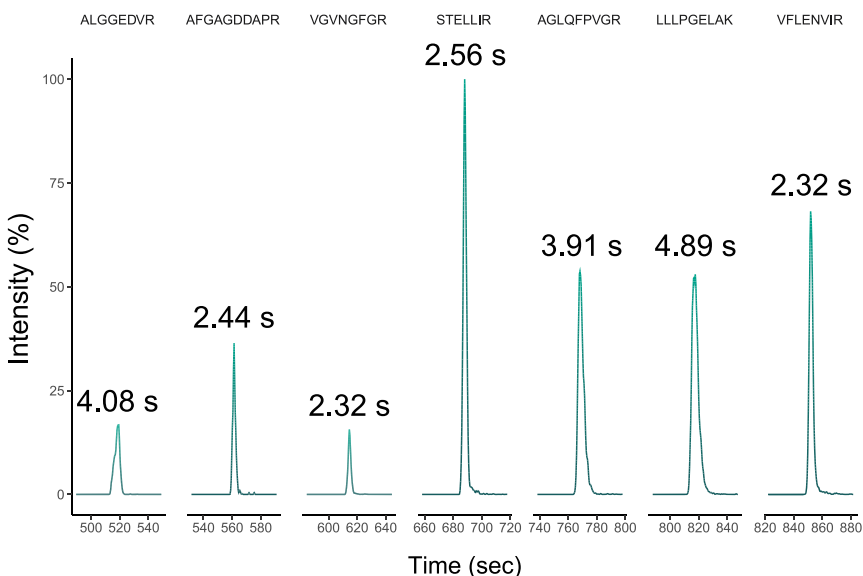
Figures 1: A dilution series of a HeLa tryptic digest was separated on an Aurora® Rapid75™ column using an Evosep One and Bruker timsTOF SCP (dia-PASEF) using an 80 samples per day method (currently under development), n = 6. Data courtesy of Dr Christoph Krisp (Bruker), Dorte Bekker-Jensen and Dr Nicolai Bache (Evosep).



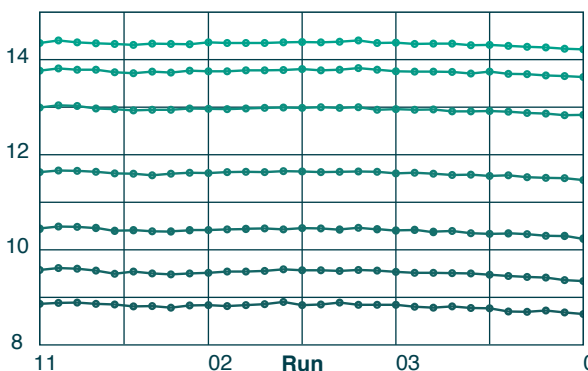
Lightning-fast peaks.

Maximum peak capacity and reproducibility for low sample inputs using short gradients.

Figure 2: A HeLa tryptic digest (1 ng) was separated on an Aurora® Rapid™ 5x75 column using a Thermo Scientific Vanquish Neo UHPLC and TSQ Quantis across a 15 min sample gradient at 100 nL/min. The extracted ion chromatograms for 7 selected peptides from the analysis are shown. The average Full Width at Half Maximum (FWHM, seconds) for each peptide across 30 runs is shown above each peak.



Unrivalled retention time stability.



Robust performance across multiple samples.

Figure 3: The retention times of the 7 peptides analysed in the adjacent figure were plotted across 30 runs to demonstrate retention time stability for the Aurora® Rapid™ 5x75 column.



Further literature at:
ionopticks.com
 ionopticks