

PRODUCT OVERVIEW

Aurora® Elite™

15 cm x 150 µm



Reliable performance for a wide variety of workflows.

The perfect balance between throughput, robustness, and analytical depth for complex samples.

When you need confidence in your results, today. The Generation 4 Aurora® Elite™ 15x150 capillary flow column offers the ideal combination of efficiency and reliability, providing confident results across a range of flow rates while maintaining the analytical performance your complex samples require.

Product Benefits

- + Stable and reproducible analysis
- + Balance speed and resolution
- + Exceptional coverage
- + Made for demanding applications

Ideal for:
Drug discovery,
clinical proteomics,
and bioprocessing
development

30-100
SPD

10-45_{min}
Gradients

Specifications

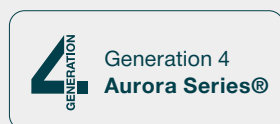
Column format	Analytical column
Column type	Reversed-phase
For use with	UHPLC
Length	15 cm
Inner Diameter	150 µm
Pore size	120 Å
Pressure	>1700 bar
Temp. limits	60°C
Particle size	1.7 µm
pH stability	1-8
Stationary phase	C18
Suggested flow rate	0.4-2.5 µL/min (can be varied to suit particular applications)

Compatibility

	Aurora®	Aurora® CSI	Aurora® XT	Aurora® XS
CaptiveSpray		✓		
CaptiveSpray 2		✓		
CaptiveSpray Ultra		✓		
EASY-Spray			✓	
Nanospray Flex	✓		✓	
Newomics UniESI			✓	
Newomics DuoESI			✓	
OptiFlow Turbo V				✓
OptiFlow Pro				✓

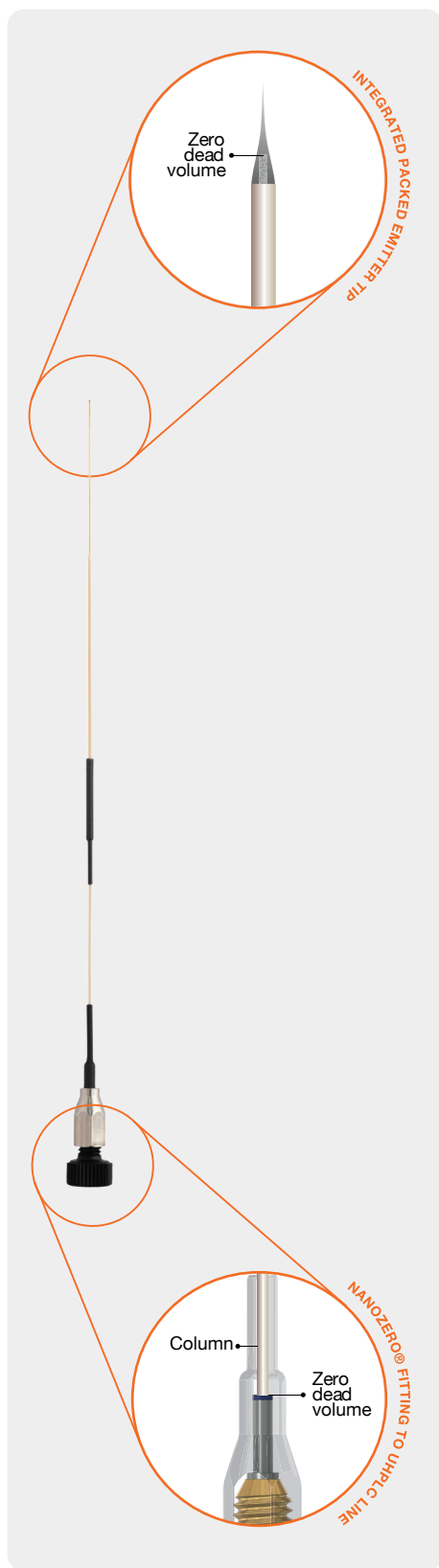


Introducing the HeatSync™ range - the perfect companion to make the world's best chromatography even better. Includes the new HeatSync™ Controller and HeatSync™ Column Heater.



Ion Opticks Pty Ltd
ABN: 99 621 674 459
12 Gipps St
Collingwood VIC 3066
Australia

www.ionopticks.com

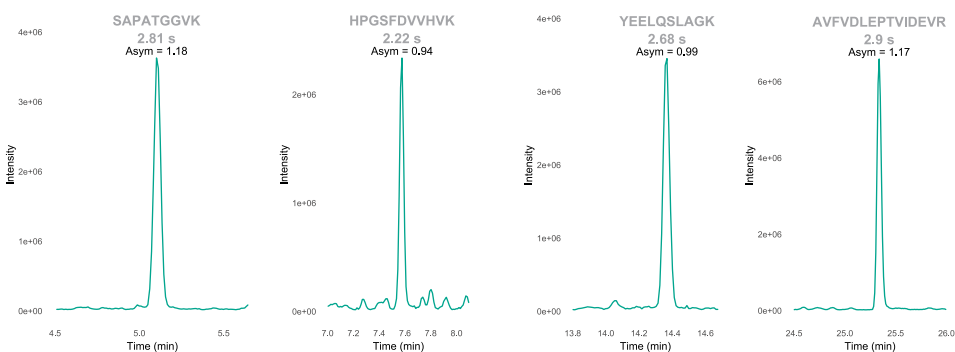
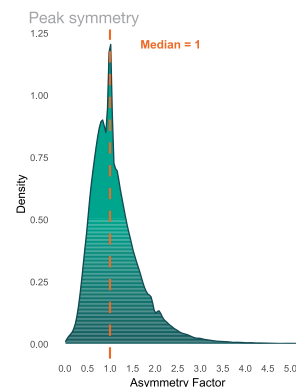


Peak characteristics

Aurora® Elite™ capillary flow chromatography column for rapid and reproducible peptide analysis

Figure 1: Example peaks were chosen across the 1.5µl/min 30 min gradient. All peaks show excellent FWHM and symmetry through the entire gradient.

Figure 2: Asymmetry factors were calculated for all identified peptides, and plotted on a density plot. The Median asymmetry was equal the 1, indicating that a majority of peaks show a Gaussian distribution.



Reproducibility

CV by gradient and flow rate

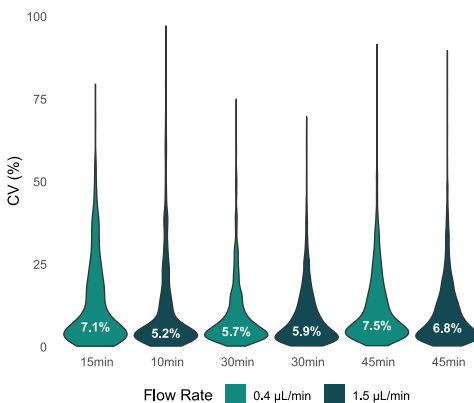


Figure 3: HeLa tryptic digest was run on an Aurora Elite 15 cm x 150 µm column. Gradients 10min, 15min, 30min and 45min were run at flowrates 0.4 ul/min and 1.5 ul/min (4 replicates). Coefficient of variations of protein intensities were calculated across runs within each condition. Resulting calculations show sub 8% median CV across all samples.

Resolution

FWHM by gradient and flow rate

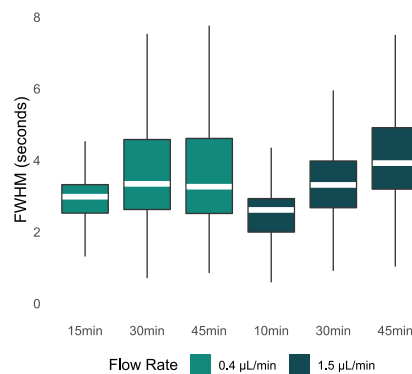


Figure 4: HeLa tryptic digest was run on an Aurora Elite 15 cm x 150 µm column at four different gradients and two flow rates. 10min, 15min, 30min and 45min, at both 0.4 and 1.5ul/min. Across all runs, the average FWHM is below 4 secs.



Further literature at:
ionopticks.com
 ionopticks

Methods

100ng of HeLa tryptic digest was introduced on an NCP3200 Ultimate 3000 LC, separated on an Aurora® Elite™ 15 cm x 150 µm column and Bruker Impact II Mass Spectrometer. Solvents were 0.1% formic acid as solvent A and 99.9% Acetonitrile as solvent B. Capillary voltage was set to 1800V, m/z range 200-2000. With AutoMS/MS on, and cycle time 0.5sec.